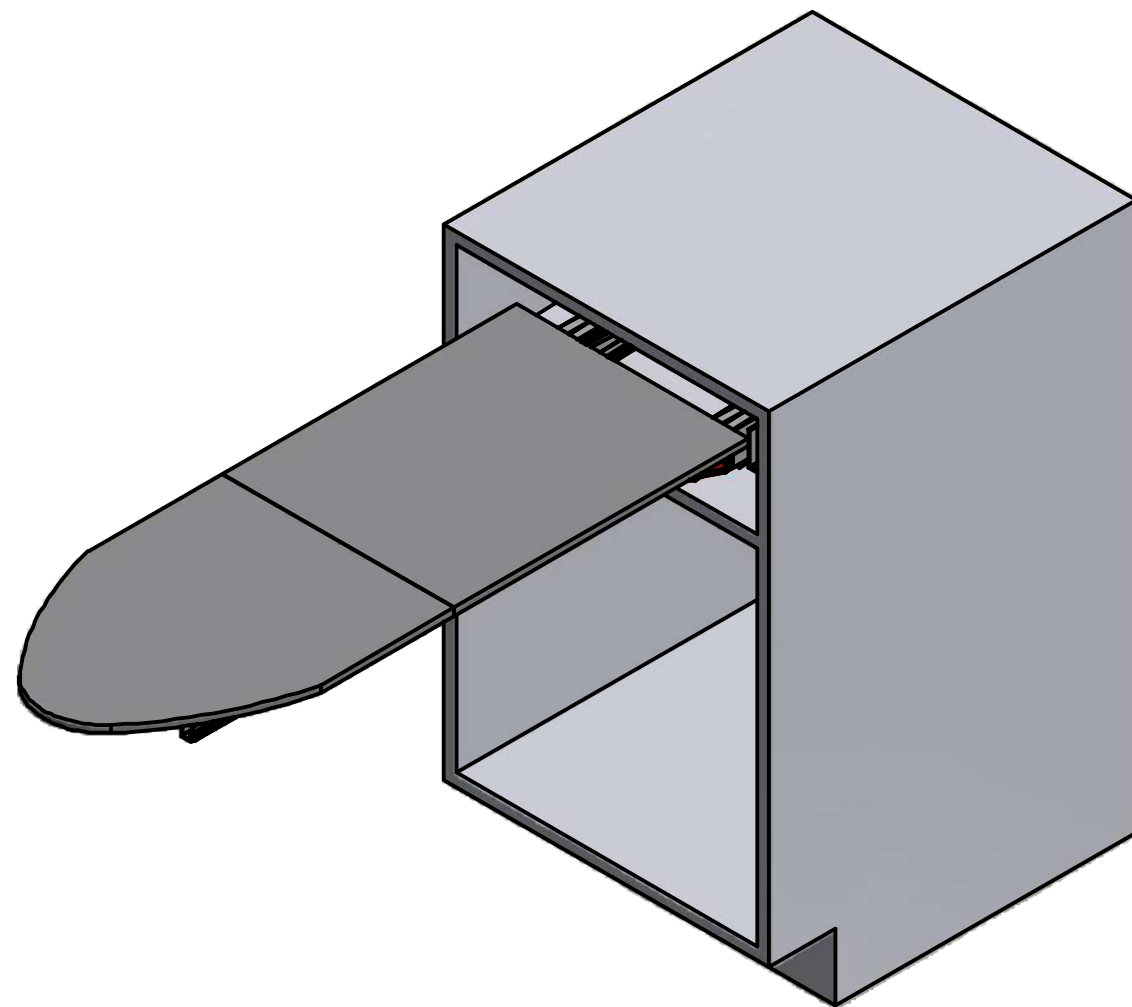


PRUA SHORT

INSTRUCCIONES DE MONTAJE

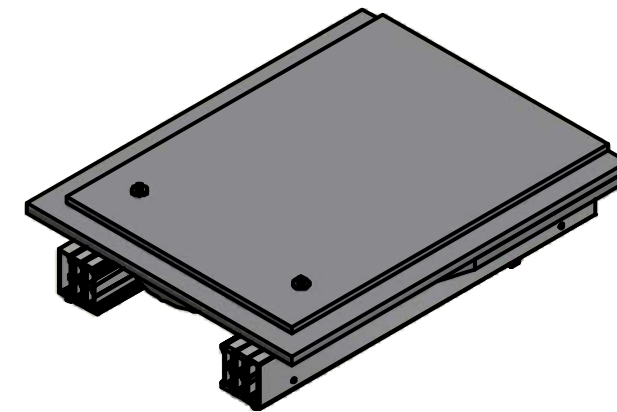
Modelo

411/78.1181.22








CONTENIDO DEL EMPAQUE

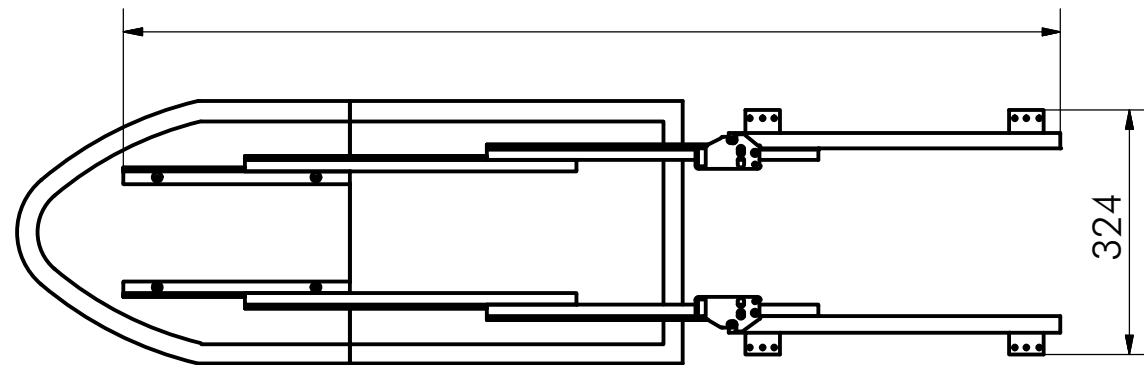
Guía + Mesa de planchar



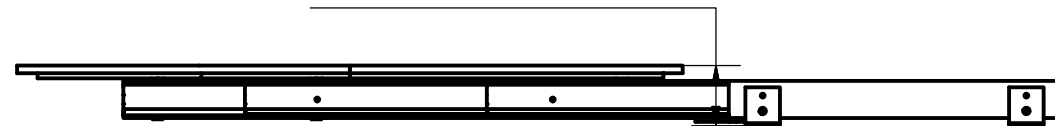
ACCESORIOS

-  A. Llave Allen n°5 (x 1)
-  B. Tornillo TCCE M6x12 (x 4)
-  C. Pin - Pin (x 2)
-  D. Soporte de fijación (x 4)
-  E. Tornillo de aglomerado 3.0 x 20 (x 8)

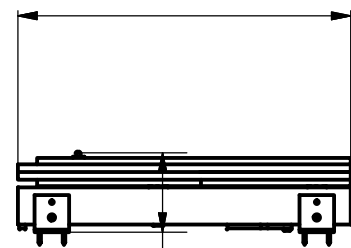
DIMENSIONES GENERALES



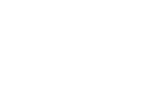
Altura total: 80



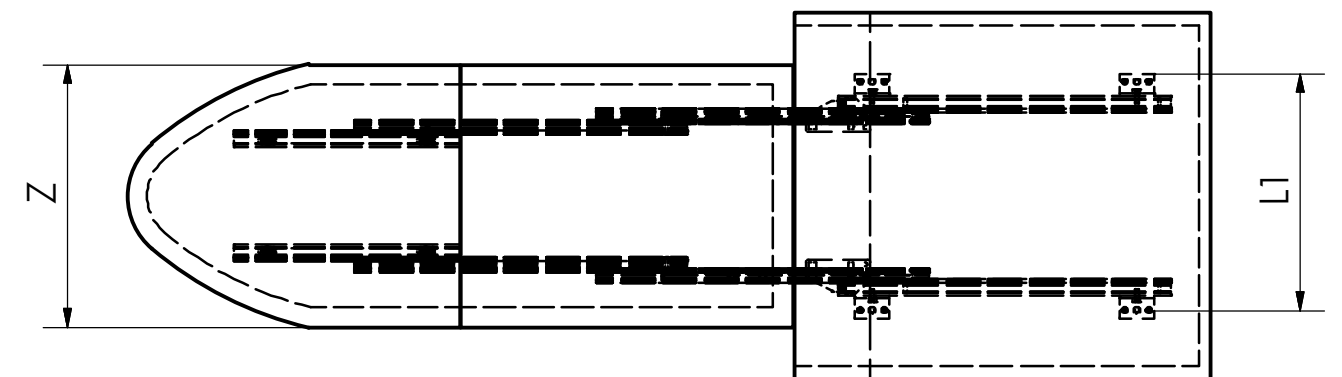
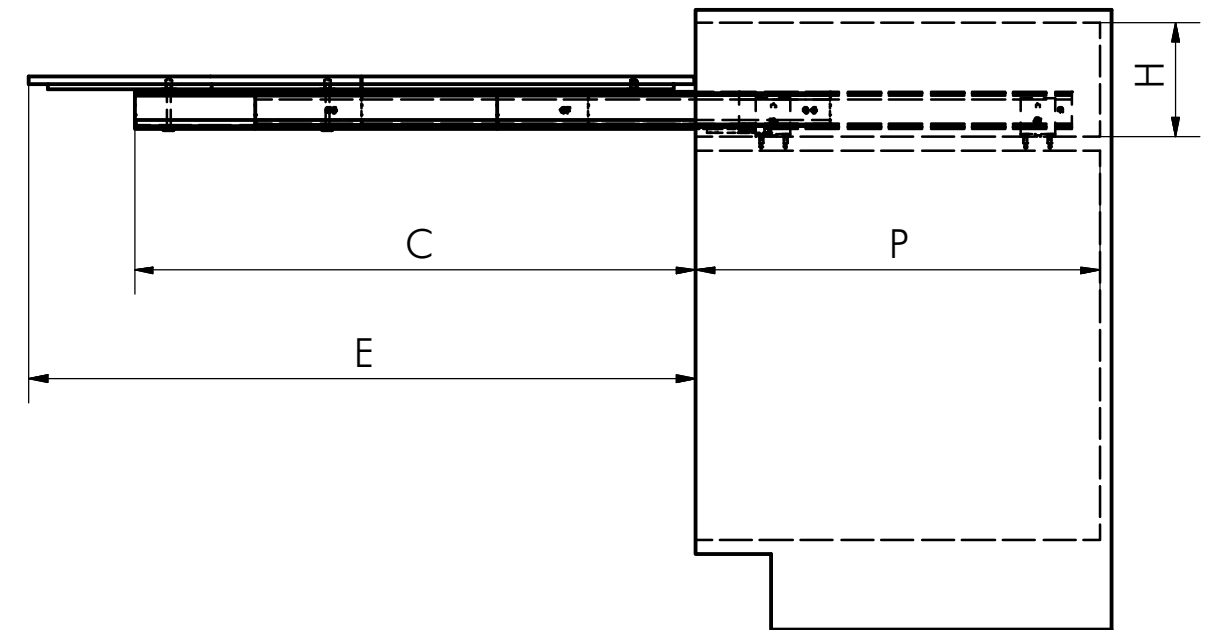
Máxima extensión cerrado: 440



Altura total: 110

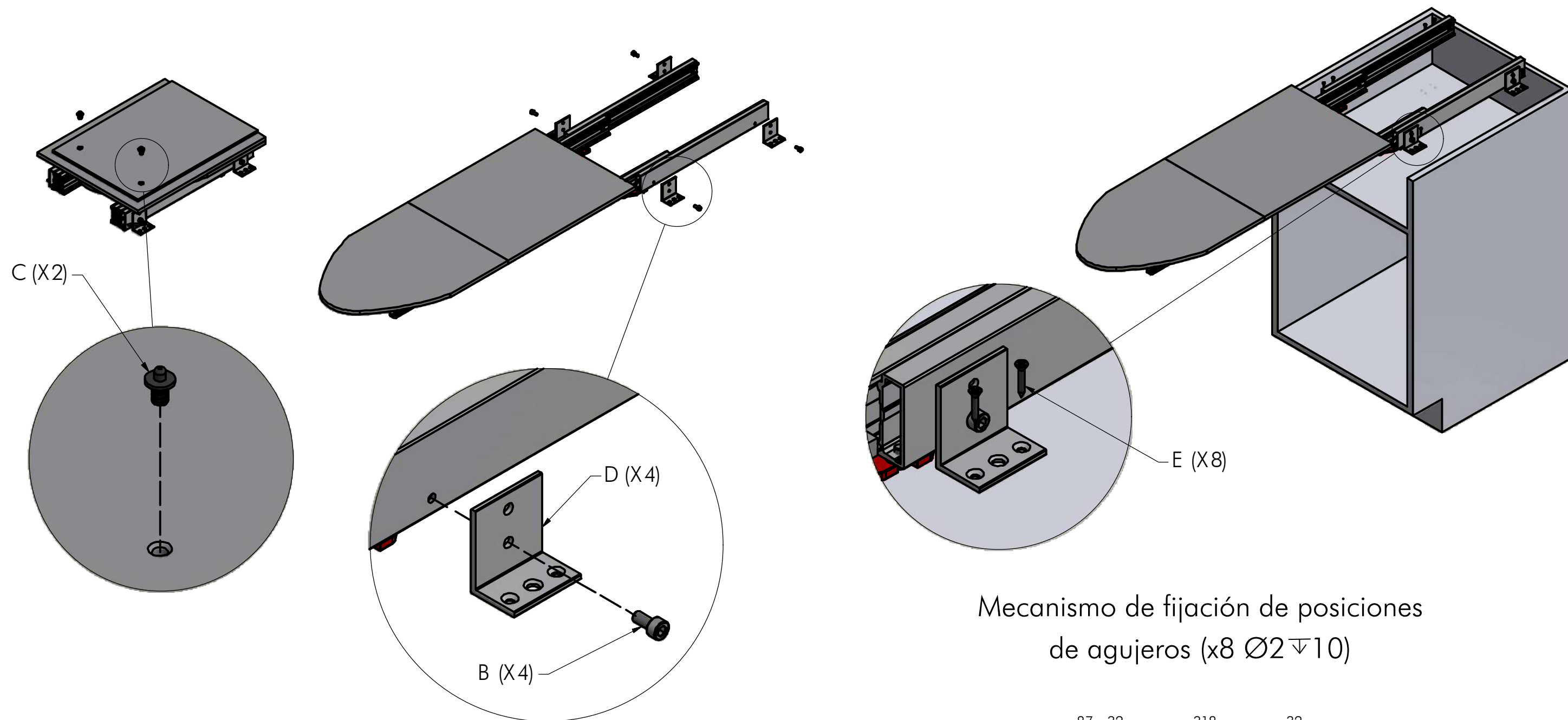


DIMENSIONES GENERALES DEL MUEBLE

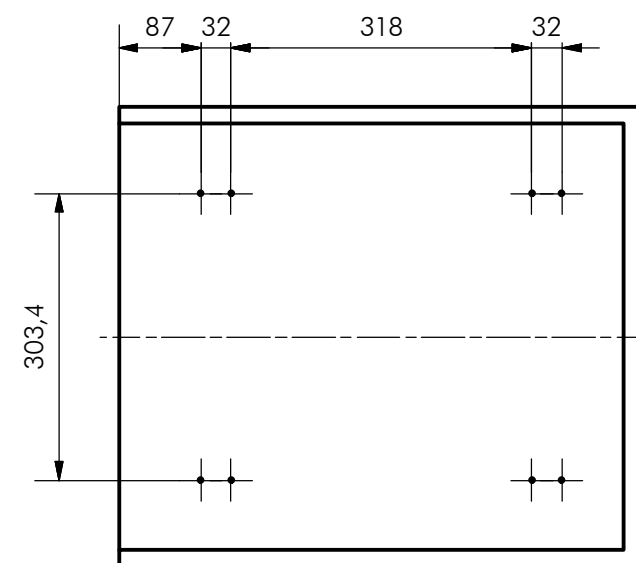


DIMENSIÓN	SIMBOLO	mm
Altura	H	MIN: 140
Profundidad	P	MIN: 450
Ancho	L1	330
Ancho de la superficie	Z	350
Apertura de la superficie	E	840
Apertura del mecanismo	C	700

MONTAJE DEL MECANISMO EN EL MUEBLE

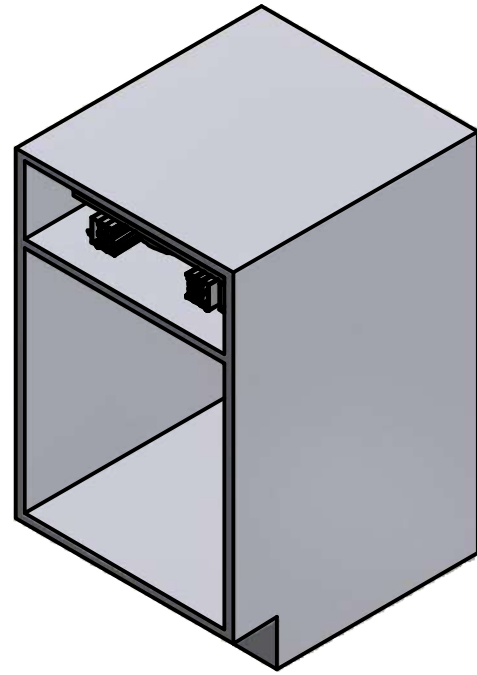


Mecanismo de fijación de posiciones
de agujeros (x8 $\text{Ø}2 \nabla 10$)

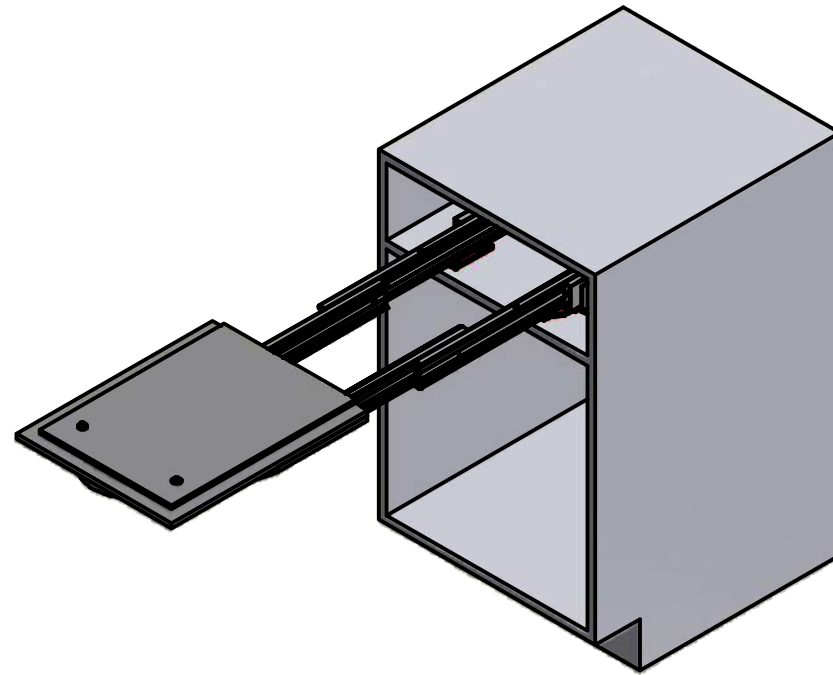


- A. Llave Allen n°5 (x 1)
- B. Tornillo TCCE M6 x 12 (x 4)
- C. Perno (x 2)
- D. Soporte de fijación (x 4)
- E. Tornillo de aglomerado 3.0 x 20 (x 8)

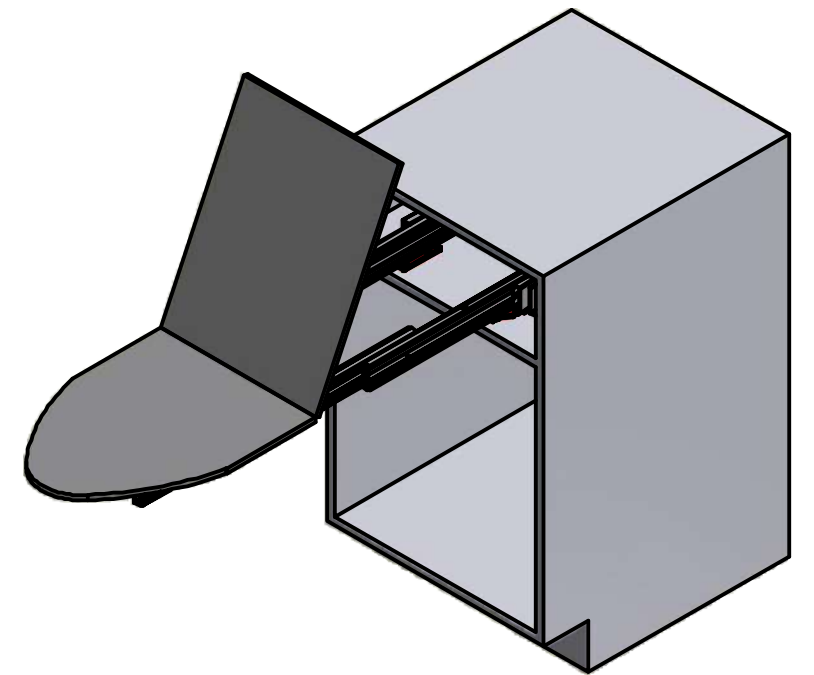
SECUENCIA DE FUNCIONAMIENTO



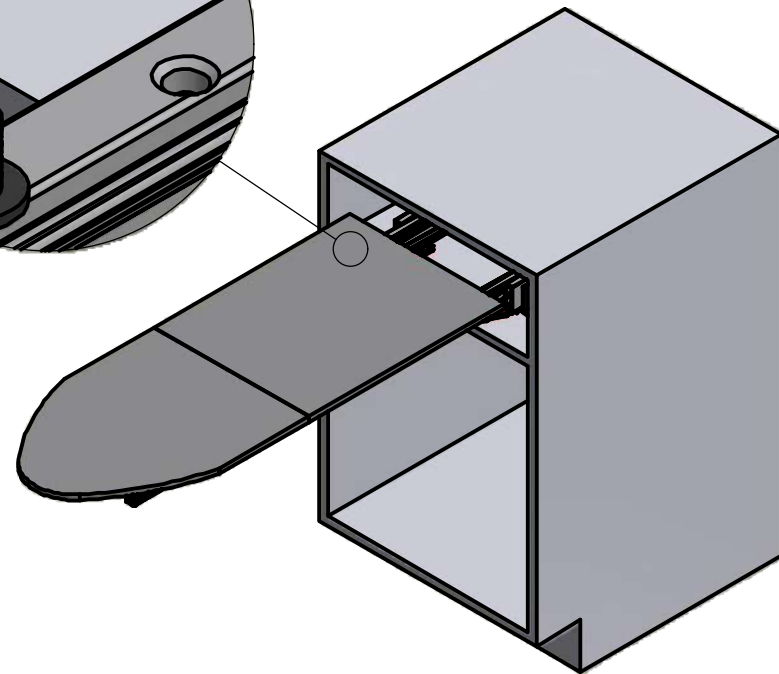
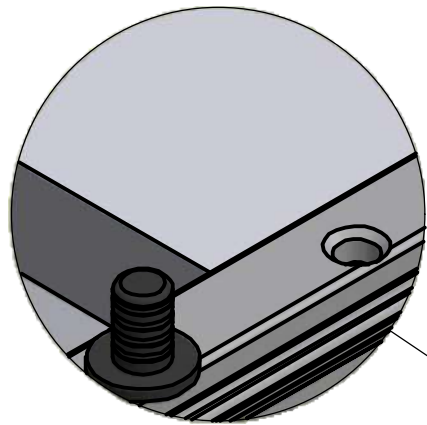
Cerrado



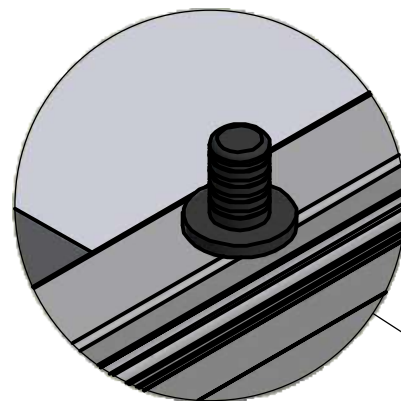
Extracción de la guía



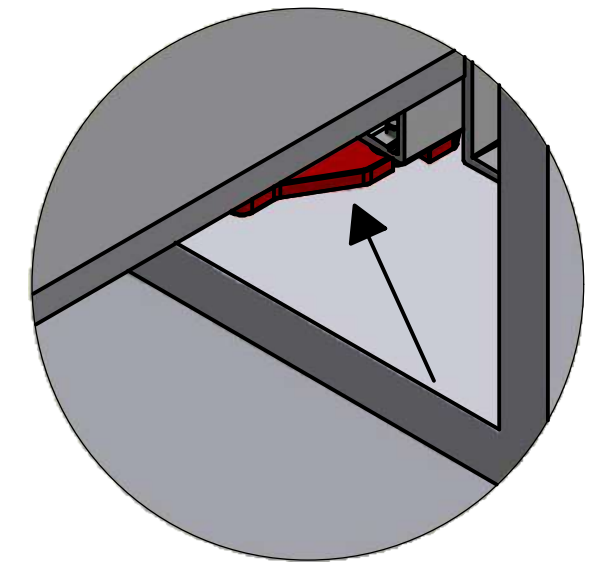
Rotación de la mesa



Abierto



Para bloquear el estante, empújelo hacia dentro para que el para que el pasador de bloqueo encaje en su asiento



Para cerrar el mecanismo, empuje las dos palancas de plástico rojas hacia dentro